



**RE/MAX**  
Elite



## 2 Somerfield Close, Walsall, WS4 1PP

### £270,000

DETACHED FAMILY HOME ON GENEROUS CORNER PLOT IN SHELFIELD WITH DOUBLE GARAGE & VERSATILE OUTBUILDING

This three-bedroom detached family home is perfectly positioned on a spacious corner plot in the sought-after area of Sheffield. Offering a generous floor plan with multiple reception rooms, two bathrooms, and a double garage—this home is ideal for families needing space and flexibility. A standout feature is the converted garage room, providing an excellent home office, gym, or hobby space. The low-maintenance rear garden is fully enclosed and ideal for entertaining, while a double driveway adds excellent off-road parking.

#### Room-by-Room Breakdown

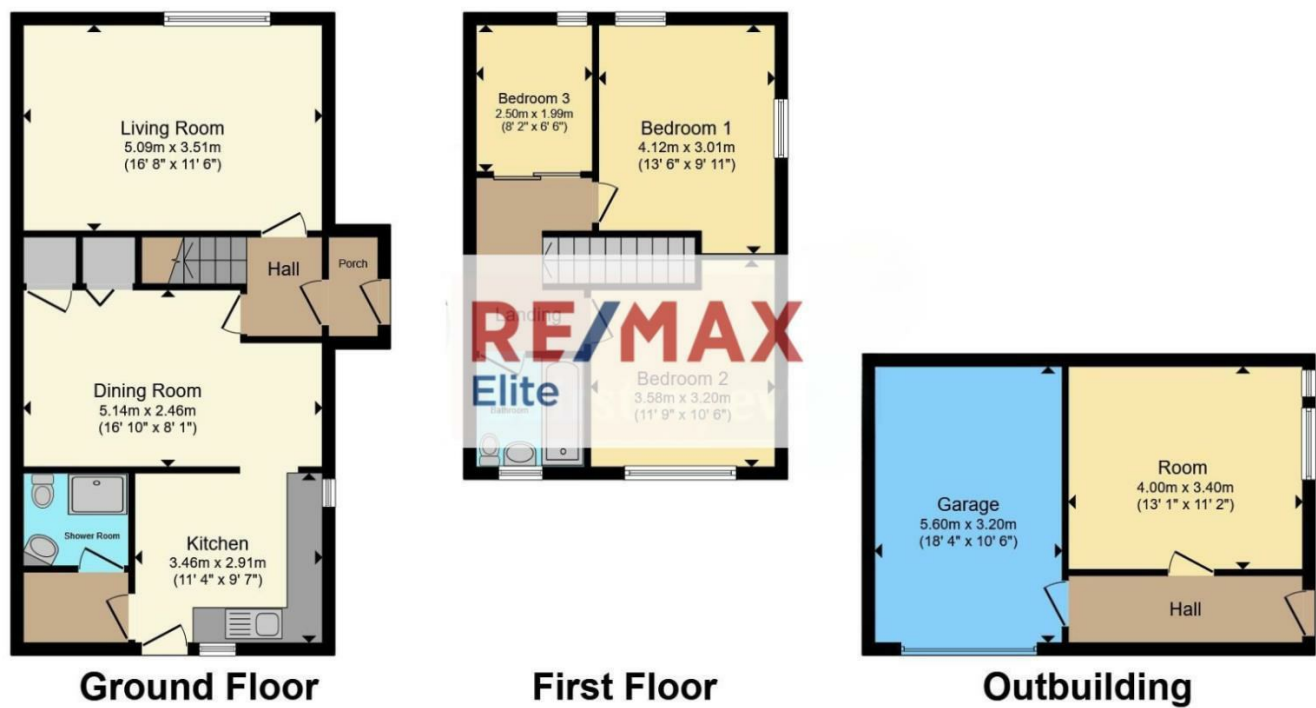
##### Ground Floor

##### Porch / Entrance Hall

Welcoming entry with space for coats and shoes, leading into the main hallway.

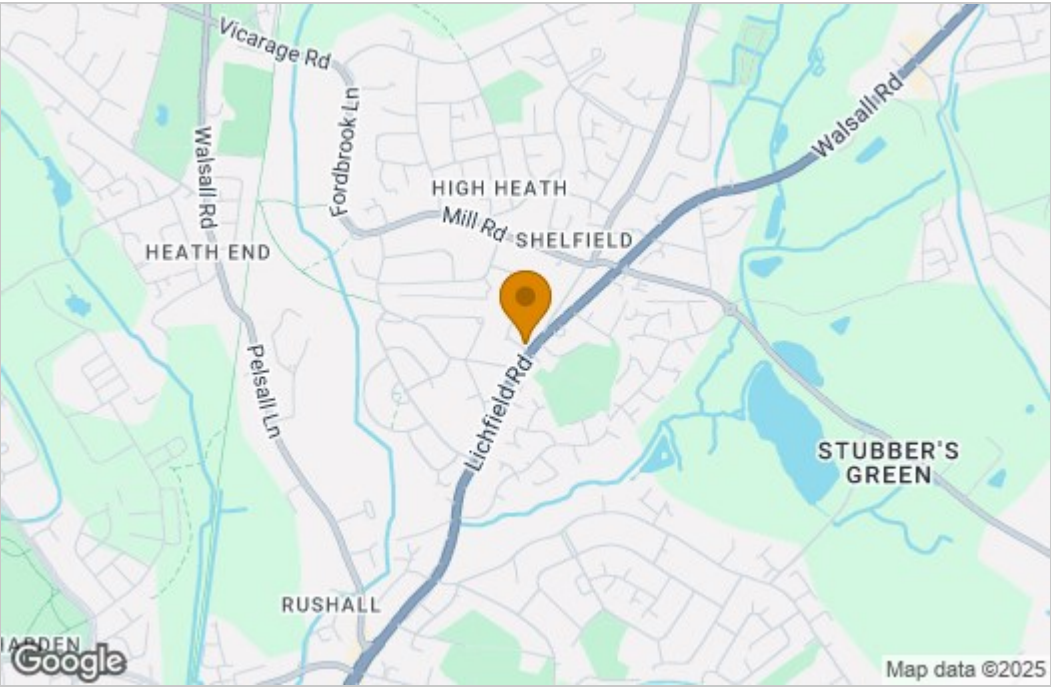


Floor Plan

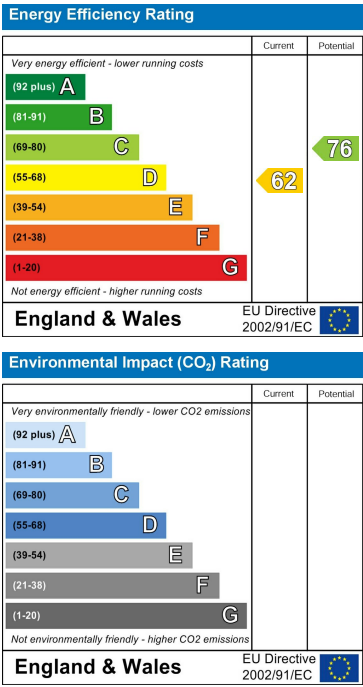


Total floor area 128.1 m<sup>2</sup> (1,379 sq.ft.) approx  
This floor plan is for illustrative purposes only. It is not drawn to scale. Any measurements, floor areas (including any total floor area), openings and orientation are approximate. No details are guaranteed, they cannot be relied upon for any purpose and they do not form part of any agreement. No liability is taken for any error, omission or misstatement. A party must rely upon its own inspection(s). Powered by [www.focalagent.com](http://www.focalagent.com)

Area Map



Energy Efficiency Graph



These particulars, whilst believed to be accurate are set out as a general outline only for guidance and do not constitute any part of an offer or contract. Intending purchasers should not rely on them as statements of representation of fact, but must satisfy themselves by inspection or otherwise as to their accuracy. No person in this firm's employment has the authority to make or give any representation or warranty in respect of the property.